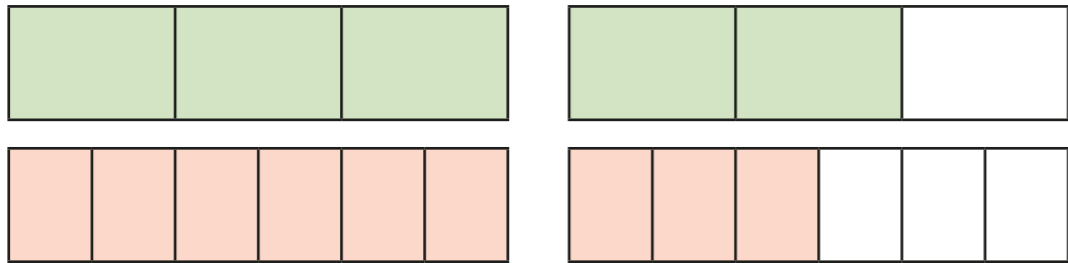


# Compare and order fractions greater than 1

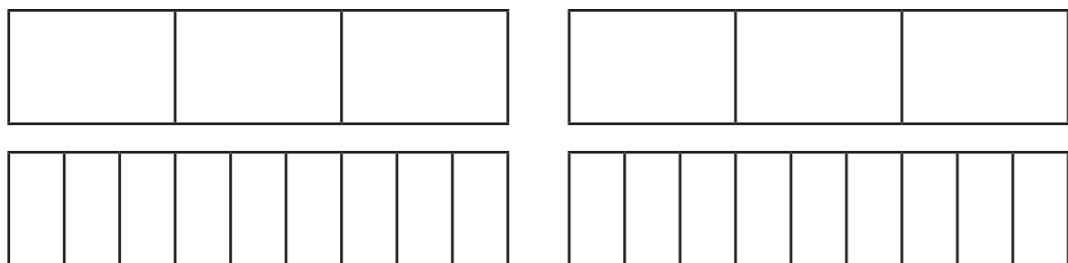


1 Write  $<$ ,  $>$  or  $=$  to compare the fractions.  
Use the bar models to help you.

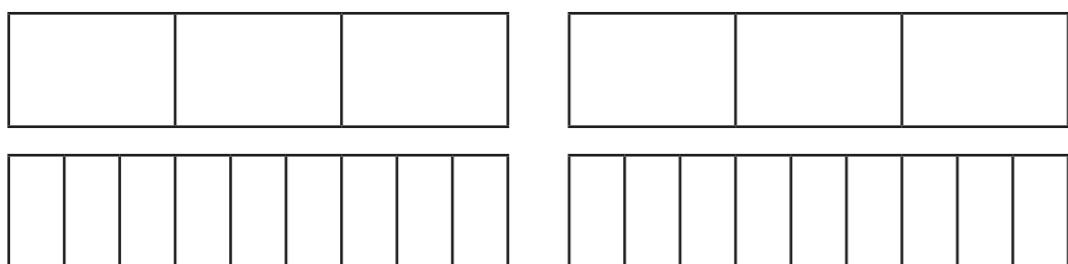
a)  $\frac{5}{3}$  ○  $\frac{9}{6}$



b)  $\frac{5}{3}$  ○  $\frac{15}{9}$



c)  $\frac{4}{3}$  ○  $\frac{13}{9}$



2 Write  $<$ ,  $>$  or  $=$  to compare the fractions.

- |                                     |                                   |                                     |
|-------------------------------------|-----------------------------------|-------------------------------------|
| a) $\frac{7}{4}$ ○ $\frac{12}{8}$   | d) $\frac{10}{6}$ ○ $\frac{5}{3}$ | g) $\frac{18}{8}$ ○ $\frac{32}{16}$ |
| b) $\frac{7}{4}$ ○ $\frac{22}{12}$  | e) $\frac{10}{6}$ ○ $\frac{5}{2}$ | h) $\frac{18}{8}$ ○ $\frac{9}{4}$   |
| c) $\frac{22}{12}$ ○ $\frac{10}{6}$ | f) $\frac{5}{2}$ ○ $\frac{18}{8}$ | i) $\frac{9}{4}$ ○ $\frac{18}{2}$   |

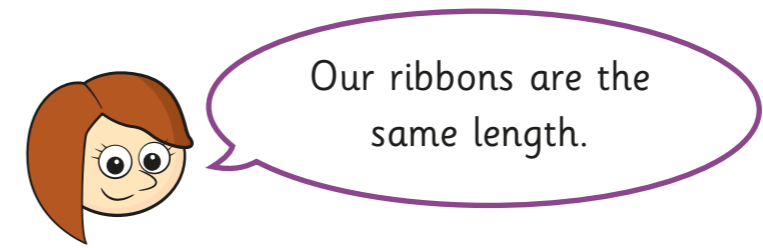
3 Filip has  $3\frac{3}{16}$  bottles of juice.

Scott has  $3\frac{1}{4}$  bottles of juice.

Who has more juice?  
\_\_\_\_\_ has more juice.

4 Rosie's ribbon is  $\frac{7}{4}$  metres long.

Teddy's ribbon is  $\frac{7}{8}$  metres long.



Explain why Rosie is wrong.  
\_\_\_\_\_  
\_\_\_\_\_

5 Write the fractions in descending order.

a)  $\frac{8}{3}, \frac{4}{5}, \frac{8}{15}, \frac{8}{2}, \frac{16}{8}$

□ □ □ □ □

b)  $\frac{7}{3}, \frac{12}{9}, \frac{15}{9}, \frac{15}{6}, \frac{7}{9}$

□ □ □ □ □

c)  $\frac{14}{5}, \frac{17}{10}, \frac{27}{10}, \frac{3}{1}, \frac{42}{20}$

□ □ □ □ □

6 Find three possible ways to complete each statement.

a)  $\frac{1}{4} < \frac{\square}{4} < \frac{9}{8}$

$\frac{1}{4} < \frac{\square}{4} < \frac{9}{8}$

$\frac{1}{4} < \frac{\square}{4} < \frac{9}{8}$

c)  $\frac{4}{5} < \frac{8}{\square} < \frac{8}{4}$

$\frac{4}{5} < \frac{8}{\square} < \frac{8}{4}$

$\frac{4}{5} < \frac{8}{\square} < \frac{8}{4}$

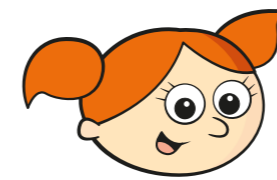
b)  $\frac{1}{4} < \frac{\square}{15} < \frac{7}{15}$

$\frac{1}{4} < \frac{\square}{15} < \frac{7}{15}$

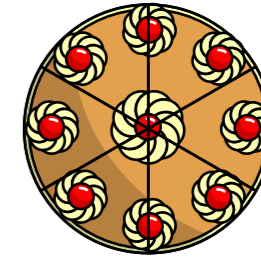
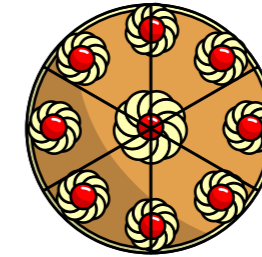
$\frac{1}{4} < \frac{\square}{15} < \frac{7}{15}$

7 Alex and Dora each have two identical cakes.

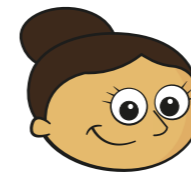
Alex cuts each of her cakes into 6 equal pieces and gives 10 of her friends a piece each.



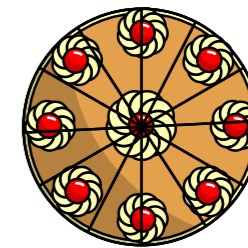
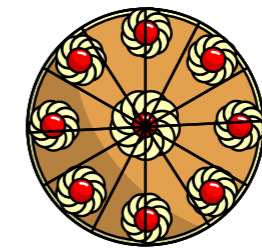
Alex



Dora cuts each of her cakes into 12 equal pieces and gives 18 of her friends a piece each.



Dora



Who has more cake left?

\_\_\_\_\_ has more cake left.

8 The greater the numerator, the greater the fraction.

Give at least three examples to show that the statement is not correct.

\_\_\_\_\_

\_\_\_\_\_

\_\_\_\_\_

